



KANE COUNTY

WOJNICKI, Weber, Allan, Barreiro, Hernandez, Kious, Sanchez

ENERGY AND ENVIRONMENTAL COMMITTEE

FRIDAY, JULY 12, 2019

County Board Room

Agenda

9:00 AM

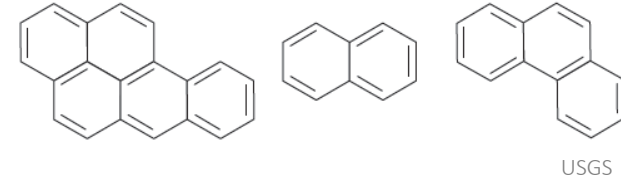
Kane County Government Center, 719 S. Batavia Ave., Bldg. A, Geneva, IL 60134

1. **Call to Order**
2. **Approval of Minutes: June 14, 2019**
3. **Environmental (J. Wollnik)**
 - A. Coal Tar Sealcoat
4. **Recycling/Solid Waste (J. Jarland)**
 - A. Presentation: Recycling & Waste Management Updates (attached)
5. **Sustainability (J. Mino)**
 - A. Discussion: Solar Power Hour Event Announcement (attached)
 - B. Presentation: Rain Garden Update
6. **New Business**
7. **Public Comment**
8. **Reports Placed on File**
9. **Executive Session (If Needed)**
10. **Adjournment**

Coal Tar Sealcoat & PAHs

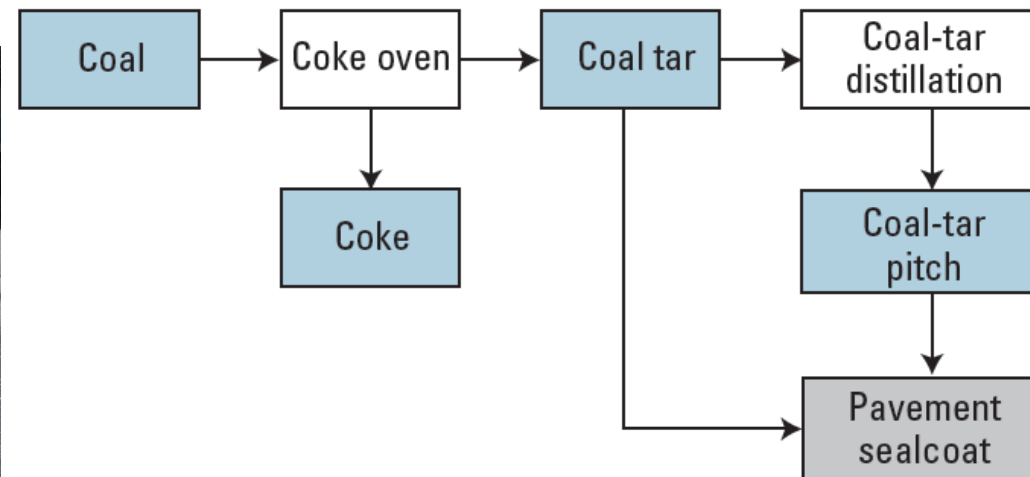
PAHs: Polycyclic Aromatic Hydrocarbons

- 2+ six-carbon ringed compounds
- Many are known carcinogens
 - benzo(a)pyrene, benzo(a)anthracene
- Formed by incomplete combustion of organic matter



Coal Tar Sealcoat

- Black, viscous liquid sprayed or painted on many asphalt parking lots, driveways, and playgrounds
- CTS contains 20-35% coal tar pitch
- CT pitch is byproduct of coking of coal (& steel production); contains 50% PAHs by weight



USGS

Photo courtesy of Barbara Mahler, USGS

PAHs in the Environment

Sources of PAHs	mg/kg
Fresh asphalt	1.5
Weathered asphalt	3
Fresh motor oil	4
Brake particles	16
Road dust	24
Tire particles	86
Diesel emissions	102
Gasoline emissions	370
Used motor oil	440



	mg/kg
Asphalt-based sealcoat	~50
Coal tar-based sealcoat	~70,000

Sealcoat Abrasion

Contributes to PAH contamination both indoors and outdoors

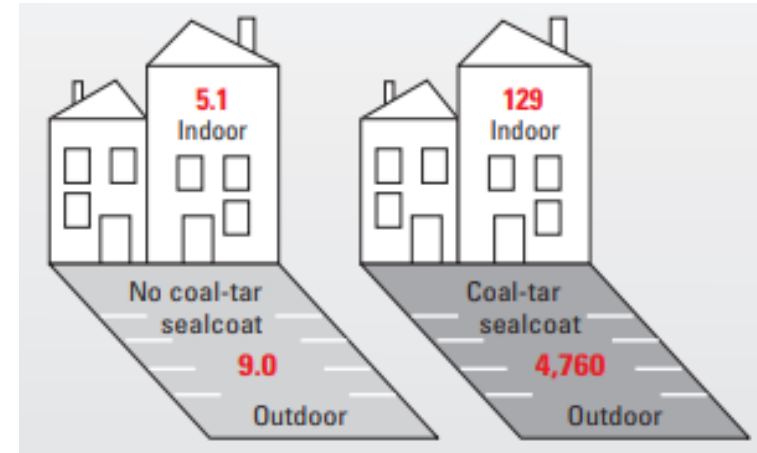


Graphic courtesy of the City of Austin, Texas

Toxicity: Human Health

- PAH levels in house dust near CT sealed parking lots were 25x higher than other surface types

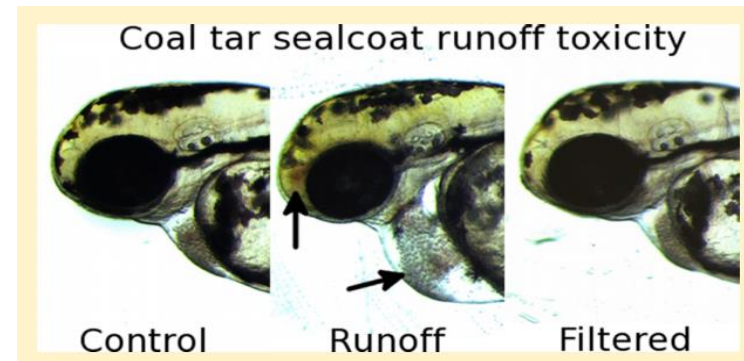
(Mahler et al. 2010. ES&T 44:894-900)



- Preschoolers living next to CT sealed pavement have either 2.5x or 10x higher PAH intake (based on child's activity level) (Williams et al. 2012. Env Pol 164:40-41)
- Lifetime excess cancer risks for those living near CT sealed lots 38x higher than those living near unsealed pavement (Williams et al. 2013. ES&T 47:1101-1109)

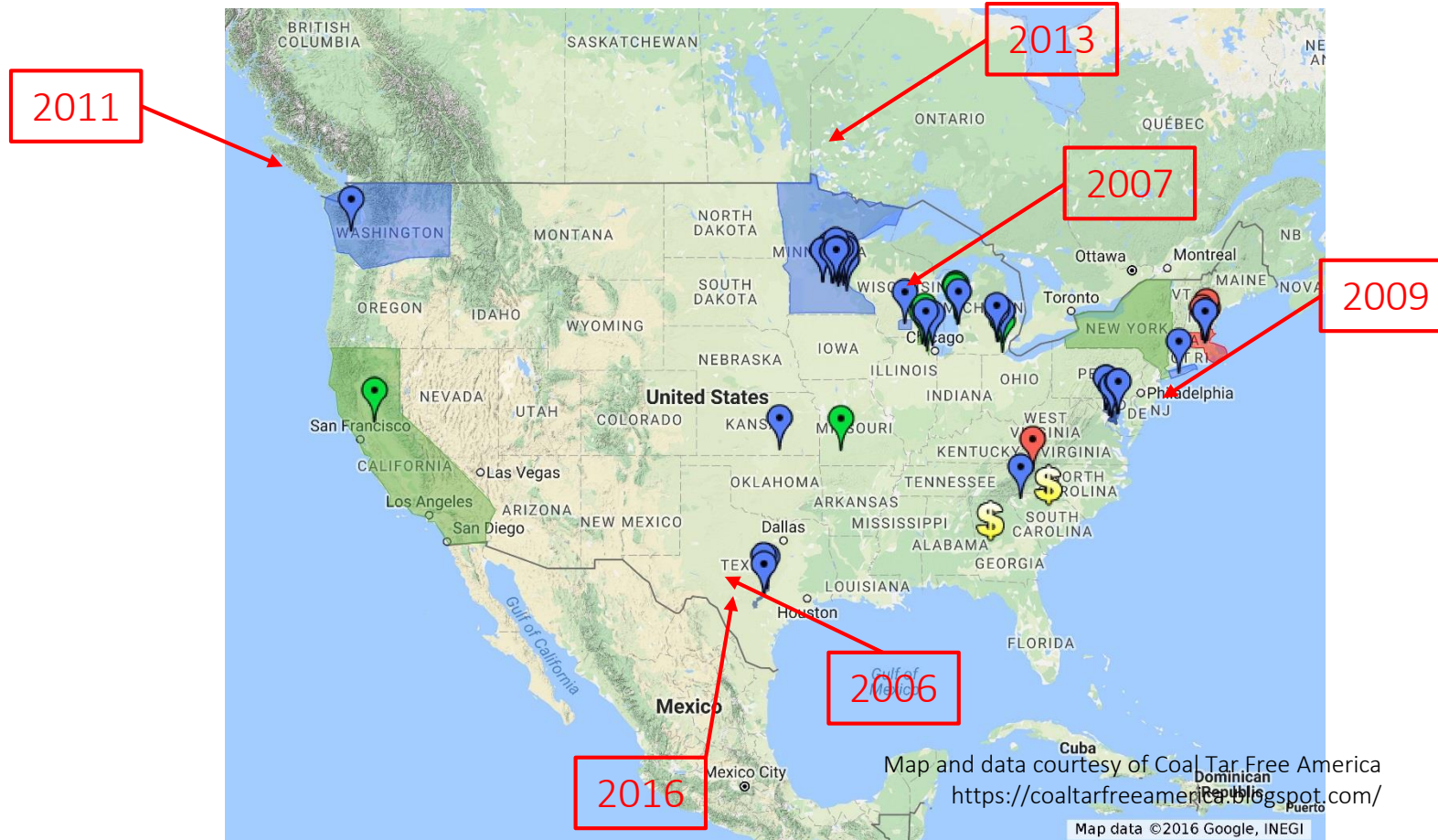
Toxicity: Environmental Health

- Runoff from CT sealed pavement acutely toxic to fathead minnows and water fleas (Mahler et al. 2015. ES&T 49:5060-5069)
 - Filtering the runoff through bioretention system reduced toxicity
- CT runoff and simulated sunlight damaged DNA and impaired DNA repair capacity for rainbow trout liver cells (Kienzler et al. 2014. Sci Tot Env 520:73-80)
- PAHs cause cardiovascular toxicity in zebrafish embryos and are acutely lethal to juvenile coho salmon (McIntyre et al. 2016. ES&T 50:1570-1578)



Nationwide Response

States, municipalities, and agencies have taken action



State Regulatory Activity: Illinois

Bill Status of SB1184 *101st General Assembly*

[Full Text](#) [Votes](#) [Witness Slips](#) [View All Actions](#) [Printer-Friendly Version](#)

Short Description: COUNTY&MUNI-COAL TAR PRODUCTS

Senate Sponsors
Sen. [Laura Fine](#) - [Julie A. Morrison](#) - [Jacqueline Y. Collins](#)

Last Action

Date	Chamber	Action
4/12/2019	Senate	Rule 3-9(a) / Re-referred to Assignments

Statutes Amended In Order of Appearance

55 ILCS 5/5-1061.5 new
[65 ILCS 5/11-30-8](#) from Ch. 24, par. 11-30-8
 65 ILCS 5/11-80-24 new

Synopsis As Introduced
 Amends the Counties Code. Provides that the county board or board of county commissioners of a county may prohibit the sale of and the use of coal tar sealant product and high polycyclic aromatic hydrocarbon sealant product on any surface, except for highway structures, including, but not limited to, a driveway, parking area, playground, sidewalk, bike trail, or roadway within the county. Amends the Municipal Code making similar changes.

[Senate Committee Amendment No. 1](#)
 Limits the provisions to Cook, DuPage, Lake, or McHenry counties and municipalities located within Cook, DuPage, Lake, or McHenry counties.

Bill Status of HB2443 *101st General Assembly*

[Full Text](#) [Votes](#) [Witness Slips](#) [View All Actions](#) [Printer-Friendly Version](#)

Short Description: COUNTY&MUNI-COAL TAR PRODUCTS

House Sponsors
Rep. [Robyn Gabel](#), [Kelly M. Burke](#), [Jennifer Gong-Gershowitz](#), [Kelly M. Cassidy](#), [Terra Costa Howard](#), [Sara Feigenholtz](#) and [Elizabeth Hernandez](#)

Last Action

Date	Chamber	Action
3/29/2019	House	Rule 19(a) / Re-referred to Rules Committee

Statutes Amended In Order of Appearance

55 ILCS 5/5-1061.5 new
[65 ILCS 5/11-30-8](#) from Ch. 24, par. 11-30-8
 65 ILCS 5/11-80-24 new

Synopsis As Introduced
 Amends the Counties Code. Provides that the county board or board of county commissioners of a county may prohibit the sale of and the use of coal tar sealant product and high polycyclic aromatic hydrocarbon sealant product on any surface, except for highway structures, including, but not limited to, a driveway, parking area, playground, sidewalk, bike trail, or roadway within the county. Amends the Municipal Code making similar changes.

Questions?



ILLINOIS-INDIANA SEA GRANT

**POLLUTION
PREVENTION
PROGRAM**


Sarah Zack

Pollution Prevention Extension Specialist
Illinois-Indiana Sea Grant

szack@Illinois.edu | 217-300-4076

@GreatLakesP2 | @ILINSeaGrant

www.iiseagrant.org | www.unwantedmeds.org



General Updates

in the world of recycling
and waste management

Kane County Energy & Environmental Committee

July 2019



Contents

- Waste Management acquisition of Advanced
- Task Force – Illinois Recycling Contamination Solutions
- Wasted Food Solutions group
- Residential compost programs
- Event Announcements



Waste Management acquisition of Advanced Disposal

On April 15, 2019 it was announced that WMI was to acquire Advanced Disposal for approximately \$4.9B, in effect merging the 1st and 4th largest publicly traded waste management companies in the U.S. Acquisitions such as this are contingent upon final shareholder approval and review by the DOJ to determine if the acquisition will lessen competition for waste collection services in the various areas of the country affected by the proposed acquisition. It is expected that the closing of this deal will not be completed until the first quarter of 2020.

On May 7, 2019, Steve Harris, an attorney for DOJ out of Washington, D.C., contacted Walter Willis to discuss the proposed acquisition. A conference call was then scheduled and held on May 8, 2019 with four representatives from DOJ, including Steve Harris, and Walter Willis and Larry Clark. During that call SWALCO shared some statistics with DOJ regarding market share held by a combined WMI/Advanced Disposal. These statistics are outlined in the attached letter, as is the recommendation that DOJ consider requiring that certain assets be divested in Lake County and/or other portions of the Chicagoland market prior to approval of the acquisition.

Waste Management acquisition of Advanced Disposal

Dear Mr. Harris:

The Solid Waste Agency of Lake County's Board of Directors have authorized me to send this letter to you regarding Waste Management, Inc.'s (WMI) proposed acquisition of Advanced Disposal Services (ADS). The SWALCO Board is concerned about the potential negative impact of the acquisition on competition for waste and recycling services, and base this concern on the following findings:

- SWALCO keeps detailed records on the haulers operating in Lake County and in particular those haulers that have residential collection franchises in Lake County. SWALCO's members comprise approximately 187,511 households in Lake County. If WMI acquires ADS, it will have 63% of the households in the County under franchise contract agreements. The next closest competitor has 22% of the total households.
- SWALCO keeps records on the amount of commercial waste collected by haulers in the county through a hauler licensing ordinance. According to data from this source WMI and ADS combined will control 44% of the total commercial waste collected in Lake County. The next closest competitor has a 24% market share.
- A combined WMI and ADS would own and control both remaining landfills in the County and the only material recovery facility for processing recyclables. This is too much control of essential processing and disposal capacity by one company in Lake County.
- From a larger northern IL perspective, a combined WMI and ADS would own or operate (Prairie View Landfill in Will County is owned by the County and operated by WMI) the five closest landfills to the Chicago market: Zion LF, Countryside LF, Laraway LF, Prairie View LF, and the DeKalb County LF. In addition, with the acquisition the number of waste companies serving the Chicagoland market's landfilling needs will be down to 3: Republic, Waste Connections and WMI/ADS.

SWALCO, which represents 43 municipalities and the County of Lake, asks that the Department of Justice strongly consider requiring that both hauling, and facility assets be divested as part of an approval of the acquisition. We rely on vigorous competition to ensure our residents and businesses are paying a fair market rate for collection services and believe the proposed acquisition, without a requirement to divest assets, will significantly reduce competition in our marketplace.

Sincerely,



Glenn Ryback, Chairman
SWALCO Board



Waste Management acquisition of Advanced Disposal

Points for the resolution would include some or all of the following:

- On April 15, 2019 it was announced that WMI was to acquire Advanced Disposal for approximately \$4.9B, in effect merging the 1st and 4th largest publicly traded waste management companies in the U.S., with the deal expected to close in the first quarter of 2020.
- In order to alleviate the potential negative impact of the acquisition on competition for waste & recycling services (due to the combined WMI/Advanced Disposal market share), the DOJ can require that both hauling, and facility assets be divested as part of the acquisition. This would help to ensure vigorous competition providing fair market rates for collection services.
- Without this requirement to divest assets, Kane County residents and businesses will be financially impacted by reduced competition in the marketplace for trash and recycling collection services.
- Waste Management currently holds 6 municipal contracts in KC (Elgin, Hampshire, Kaneville, Maple Park, North Aurora, Sun City/Del Webb) and Campton Township.
- Advanced Disposal holds 3 contracts in KC (Batavia, Mill Creek and Prestbury).
- Waste management will own all 3 transfer stations that serve Kane County (Elgin and Elburn which they already own and Batavia's Advanced Disposal T.S. which will be theirs.)
- Waste Management owns or manages all 5 of the landfills that serve the Chicago region.
- This set up will likely mean prices will rise for all Kane County residential and commercial services, because the other haulers deliver material to the WM transfer stations. WM can charge what they like since other transfer stations are at a disadvantaged distance from local routes.



Task Force – Illinois Recycling Contamination Solutions

- State-wide Guidelines
- Cart Tagging tool-kit
- Dirty Dozen Campaign
 - Jul: non-recyclable plastic
 - Aug: Clothing
 - Sept: HHW
 - Oct: Batteries
 - Nov: Plastic Bags
 - Dec: Frozen Food Containers
 - Jan: Bio-haz – diapers, syringes
 - Feb: Flattened containers
 - Mar: Yucky stuff: food and liquids
 - Apr: Shredded Paper
 - May: Tanglers
 - Jun: Scrap Metal

Illinois Wasted Food Solutions group

REDUCE

Illinois landfills receive 14 million tons of waste annually.
 Nearly 20% of that is food scraps.
 That's 2.8 million tons of food scraps each year!

RECOVER & DONATE

40% of all food in the US gets wasted, while 1 out of 7 Americans are food insecure.
 In Illinois more than one million people struggle with hunger and food insecurity.

RECYCLE/COMPOST

Decomposing food in landfills releases methane, a greenhouse gas 25x to 84x more powerful than carbon dioxide.
 Compost is vital to developing healthier soil for our farmers.

WHO WE ARE A diverse set of organizations helping build a unified approach towards reducing wasted food and leveraging it to benefit our region.

WHAT WE DO Collaborate to combat wasted food by creating solutions geared toward the US EPA hierarchy preventing food loss, rescuing and redistributing edible food, and recycling food through composting and other technologies.

ORGANIZATIONS PARTICIPATING TO DATE (June 2019)

Advocates for Urban Agriculture
 Aramark
 Bright Beat
 Chicago Food Policy Action Council (CFPAC)
 Chartwells
 Chicago Public Schools
 City of Chicago
 City of Evanston
 City of Highland Park
 Consortium to Lower Obesity in Chicago Children (CLOCC)
 Cook County Department of Environmental Control
 Environmental Law & Policy Center
 FARM IL
 Fresh Taste

Gourmet Gorilla
 Greater Chicago Food Depository
 Greenest Region Corps/Metropolitan Mayors Caucus
 Healthy Schools Campaign
 Illinois Environmental Council
 Illinois Environmental Protection Agency
 Illinois Food Scrap Coalition
 Illinois Public Health Association
 Illinois Sustainable Technology Center
 Illinois Stewardship Association
 Kane County
 Lakeshore Recycling Systems
 Liberty Prairie Foundation

Mindful Waste
 Northern Illinois Food Bank
 Oak Park River Forest Food Pantry
 SCARCE
 Seven Generations Ahead
 SWALCO - Solid Waste Agency of Lake County
 SWANCC - Solid Waste Agency of Northern Cook County
 University of IL Extension
 University of IL-Chicago
 Urban Canopy
 US EPA Region 5
 US Foods
 USDA Food and Nutrition Service, Midwest Region



Illinois Wasted Food Solutions group

OUR WORK

Following the first large-scale planning meeting in spring 2018, we created our mission and value statements; convened several working groups; and developed a scope of work for funding requests.

MISSION :

To develop a working strategy and action platform that makes Illinois a leader in reducing wasted food by connecting and building on current wasted food initiatives, education, and policy in unified ways that holistically promote source reduction; food recovery for hunger relief and other uses; and recovery of food scraps for composting and creating healthy soil.

VALUES :

Collaboration: We build strong connections and engagement among rural and urban stakeholders in the Illinois food system, including support for the Illinois agriculture community.

Education: We strive to develop replicable and scalable models that educate statewide stakeholders on best practices for reducing food waste.

Good Stewardship and Sustainability: We value the links between reducing food waste and increasing healthy agricultural practices that are good for the soil, farmers, and food.

Equity: We value a community that is not only inclusive and respectful, but also strives to create economic opportunities and serve the needs of disadvantaged or underprivileged populations and communities.

Join us and collaborate to create an Illinois Wasted Food Reduction Action Plan

Now is the time to join forces and develop an **Illinois Wasted Food Reduction Action Plan**. With new decision makers at the state and local levels prioritizing existing and new environmental work, this plan will address the importance of reducing wasted food in Illinois. We need your input!!!

Food loss prevention, recovery, and composting will be an essential part of any state plan and the goal of our group is to develop an action plan that can be incorporated into broader state and local plans related to waste reduction, local food, and more. Bring your input to help guide collaborative action and policy-making through:

- Governor Pritzker's appointed **Statewide Materials Management Task Force**
- Collaboration to develop an **Illinois Good Food Policy**
- Illinois Environmental Council's work on the local and state levels related to policy and ordinances

HOW TO GET INVOLVED Email Vanessa Reese at wastedfoodrecovery@gmail.com to be added to our list and invited to our next meeting/event.

Residential compost programs

Municipality	County	Population	Households	Hauler	Type of Program	Cost (\$/household/month)	Year Started	Notes
Arlington Heights	Cook	75,994	18,169	Groot	Subscription service in Landscape cart	\$150/annual for 65 gallon cart: \$165/95 gallon	Feb-16	
Bannockburn	Lake	1,583	451	Lakeshore	Ride along with LSW sticker or subscription service	No increase in cost	2016	
Barrington	Cook	10,361	3,390	Groot	Landscape cart, initial year		Apr-16	Second year through a subscription service
Batavia	Kane	26,950	8,647	Advanced	ride along in landscape cart - seasonal	No increase in cost	2018	
Carol Stream	DuPage	39,989	14,408	Flood Broth	seasonal, ride along, third bin	No increase in cost	2019	
Deer Park	Lake	3,200	978	Groot	Ride along with LSW sticker or subscription service	No increase in cost	4/1/2016	
DeKalb	DeKalb	43,193	9,020	LRS	ride along in landscape cart - seasonal	No increase in cost	2017	Pilot 2017, Advanced 2018, LRS 2019 Households only represents single family homes with ride along option. Seasonal NIU residents are included in the 43,193 population. Multifamily commercial service units are not reflected in number of households.
Downers Grove	DuPage	49,540	20,042	Republic	seasonal, ride along	monthly \$17.34/35g, \$19.73/65g, \$25.82/95g	2019	
Elburn	Kane	5,863	2,200	LRS	ride along in landscape cart or bags- seasonal	No increase in cost	2018	
Elmhurst	DuPage	46,662	16,034	Republic	seasonal, ride along	No increase in cost	2019	organics tote rent for 17.50 a month
Elmwood Park	Cook	25,000	6,500	LRS	ride along in landscape cart - seasonal	No increase in cost	2019	
Evanston	Cook	74,756	14,550	Groot	Subscription based for just food organics - or mix food with lsw in paper bag	\$22 per pickup - 32 gallon cart	Mar-19	Collective Resources is the sole service provider for the City
Fox Lake	Lake	10,579	3,912	WMI	Ride along with LSW sticker or subscription service	No increase in cost	2017	
Geneva	Kane	21,800	7,973	Lakeshore	ride along in landscape cart - seasonal	No increase in cost	2018	
Glen Ellyn	DuPage	27,761		Republic	subscription service with yard waste	\$11.31/35g \$13.4/65 g \$17.4/95g all per month	Apr-16	
Glencoe	Cook	8,900	3,266	Lake Shore	Ride along with LSW sticker or subscription service	No increase in cost	Mar-19	
Glenview	Cook	45,417	14,843	Groot	Subscription service in landscape cart: starts when 30% of SWANCC communities implement	\$145/65 gallon cart	Jun-16	
Grayslake	Lake	20,957	6,674	WMI	Ride along with LSW sticker or subscription service, option for year round	No increase in cost	4/1/2016	If 175 household sign up by 9/1 each year of contract then service available for \$11.40/month during winter months
Gurnee	Lake	31,295	9,250	WMI	Ride along with LSW sticker or subscription service	No increase in cost	2018	
Hawthorn Woods	Lake	7,663	2,099	WMI	Ride along with LSW sticker or subscription service	No increase in cost	2016	
Highland Park	Lake	29,763	9,300	Lakeshore	Ride along with LSW sticker or subscription service	No increase in cost	4/1/2016	
Highwood	Lake	5,405	979	Lakeshore	Year round program, part of basic service	\$3.90	5/1/2017	
Island Lake	Lake	8,080	2,892	Prairieland	Ride along with LSW sticker or subscription service	No increase in cost	4/1/2016	
Kaneville Twp	Kane	1,480	275	DCRS (LRS)	ride along in landscape cart or bags- seasonal	No increase in cost	2019	This is a new contract effective July 1. We don't anticipate much from this rural area as residents customarily burn yard waste/leaves. Population includes Village of Kaneville which is not part of the total households.
Kildeer	Lake	3,968	1,313	WMI	Ride along with LSW sticker or subscription service	No increase in cost	2018	
LaGrange Park	Cook	13,300	4,000	LRS	ride along in landscape cart - seasonal	No increase in cost	2019	
Lake Barrington	Lake	4,973	2,140	WMI	Ride along with LSW sticker or subscription service	No increase in cost	2018	
Lake Bluff	Lake	5,722	2,120	Groot	Year round program, part of basic service	No increase in cost	2/1/2017	Went to bid in late 2016, received food scrap service and lowered rates Households only represent single family homes with ride along option. Multifamily commercial service units are not reflected in the number of households
Lisle	DuPage	22,940	4,760	LRS	ride along in landscape cart or bags- seasonal	No increase in cost	2018	
Lombard	DuPage			WM	subscription, curbside pickup seasonal	\$120/year	Apr-18	
Mill Creek SSA	Kane		2,260	Advanced	ride along in landscape cart - seasonal	No increase in cost	2017	
Mount Prospect	Cook	53,930	22,014	Republic	Ride along with LSW sticker or subscription service	No increase in cost	Mar-18	Republic Recycling Services
Mundelein	Lake	31,064	8,809	Groot	Ride along with LSW sticker or subscription service	No increase in cost	2016	
Naperville	DuPage/Wil	146,128		Groot	subscription cart service with landscape	\$108/65 cart & \$128/95 cart	2016	must use cart - combined yard waste and food scrap
North Barrington	Lake	3,047	1,140	Prairieland	Ride along with LSW sticker or subscription service, year round ongoing	\$4.25 for year round, Ride along no cost	4/1/2016	Met threshold for year round with about 15% of homes signing up
Oak Park	Cook	52,008		WM	Subscription service in landscape cart	\$14/month	Apr-12	
Park Ridge	Cook	37,494	14,446	Groot	Subscription based	\$10.50 weekly/\$15.50 bi-weekly	Mar-18	Collective Resources is the service provider
Port Barrington	Lake	1,517	518	Prairieland	Ride along with LSW sticker or subscription service	No increase in cost	4/1/2016	
River Forest	Cook	11,208		Roy Strom	subscription service, with cart during season	\$18/month	May-15	
Riverside Pilot	Cook	8,915		Flood Broth	Seasonal, ride along subscription based	\$17.00/month	2019	
Riverwoods	Lake	3,660	1,228	Lakeshore	Ride along with LSW sticker or subscription service	No increase in cost	2016	
Round Lake Beach	Lake	28,175	7,605	WMI	Ride along with LSW sticker or subscription service	No increase in cost	2018	
Tower Lakes	Lake	1,283	430	Prairieland	Ride along with LSW sticker or subscription service	No increase in cost	4/1/2016	
Volo	Lake	2,929	1,297	Groot	Ride along with LSW sticker or subscription service	No increase in cost	2017	
Wheaton	DuPage	53,648		Lakeshore	in yard waste bag or cart	per tip or sticker	Oct. 2016	
Wilmette	Cook	27,418	8,938	Advanced	Ride along with LSW sticker or subscription service	No increase in cost	Mar-19	Advanced Disposal is the service provider
Worth	Cook	10,800	2,470	LRS	ride along in landscape cart - seasonal	No increase in cost	2019	

Event Announcements

- Extravaganza tomorrow -7/13!
- 8/9 Tire Recycling Event
- 8/10 Recycling Event
 - Electronics
 - Books
 - Document Shredding

Kane County Recycling Extravaganza

Residential Recycling Event

When: Saturday, July 13th, 2019 / 8am – 12noon

Where: 540 S Randall Road, St. Charles, IL 60174



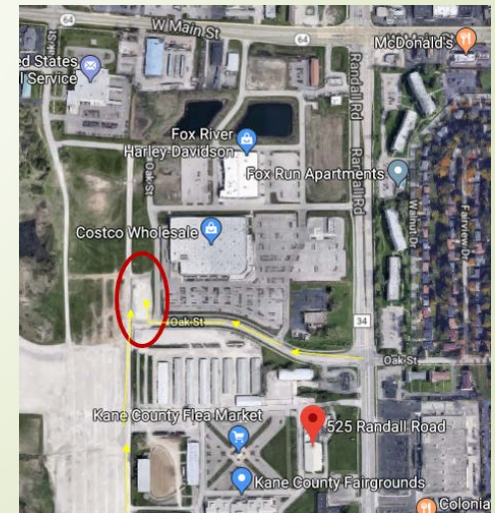
- **Batteries:** Alkaline batteries - AA, AAA, C, D, 9V & button batteries; Vehicle - car, truck, motorcycle, power sport
- **Bikes, helmets, bike baskets:** (Adult bikes in repairable condition and gently used kids bikes, no rusty bikes or parts)
- **Books:** (any age or condition, hard cover or paperback)
- **Clothes, linens, curtains, paired shoes, hats, ties, belts, purses, backpacks, stuffed animals, plush toys:** Clean, dry and free of odors. We will accept items that are stained or torn. Remove all hangers. Seal in plastic bags.
- **NO Confidential Document Shredding at this event!** There will be shredding on August 10 & September 14th. If you have paper that is already shredded, you can take it to the book recycling area, in a paper bag please, for recycling.
- **Electronics & holiday light-strings:** computers, TVs, DVD players, fax machines, printers, copiers, keyboards, mice, cables, receivers, servers, tablets, phones, electronic games, etc. Full list can be found [here](#).
 - *TVs and Monitors have a fee: \$25 for screens under 21" measured diagonally across the screen or \$35 for 21" and over. Pay with cash or card at event. All other electronic equipment is free to drop off.*
- **Fluorescent Lamps:** 4-foot tubes and CFLs, from residential sources only.
- **Paint:** Latex paint is non-toxic but difficult to dispose of because you have to dry it out before placing it in your landfill trash. However, it can be easily recycled into new products with no drying out necessary! We will also take oil based paint for a fee, but please note that it is free to drop it off at the Naperville HHW facility (see county website for more info), ePaint will be collecting paint for recycling for a tax deductible per-can fee.
 - *Paint has a recycling fee per container, payable by the resident with cash or check (latex is \$3/gal).*
- **Scrap Metal (NEW in 2019):** aluminum, copper, brass, insulated wire, cast iron, steel, other metals
- **Styrofoam blocks and food service foam:** Please bring clean sorted materials. Keep in a contained bag. (No packing peanuts or bubble wrap).

What we will NOT be collecting:

No Carpet or Carpet Padding. No Household Hazardous Waste. No Tires or Motor Oil. No bubble wrap or packing peanuts (take to UPS or FedEx stores). No mobility devices (try Goodwill). No sewing machines. No garden tools this year. No large household appliances/ "white goods" or Freon-containing appliances. No business materials; residential only, thank you.

Questions? Call 630-208-3841 or go to: www.countyofkane.org/pages/recycling

Partners include: Kane County Environmental Resources, Batteries Plus, Chicago Tuxedo Recycling, D&B Container Corp, ePaint Recycling Solutions, eWaste Electronics Services, Fluorescent, Lakeshore Recycling System, Pioneer Book, & Working Bikes. Special thanks to our neighbor, Colonial Cafe.





Event Announcements

Fox Valley Sustainability Network

**Save the Date for the Fox Valley
Sustainability Network's Transportation
Forum on Wednesday, July 24**

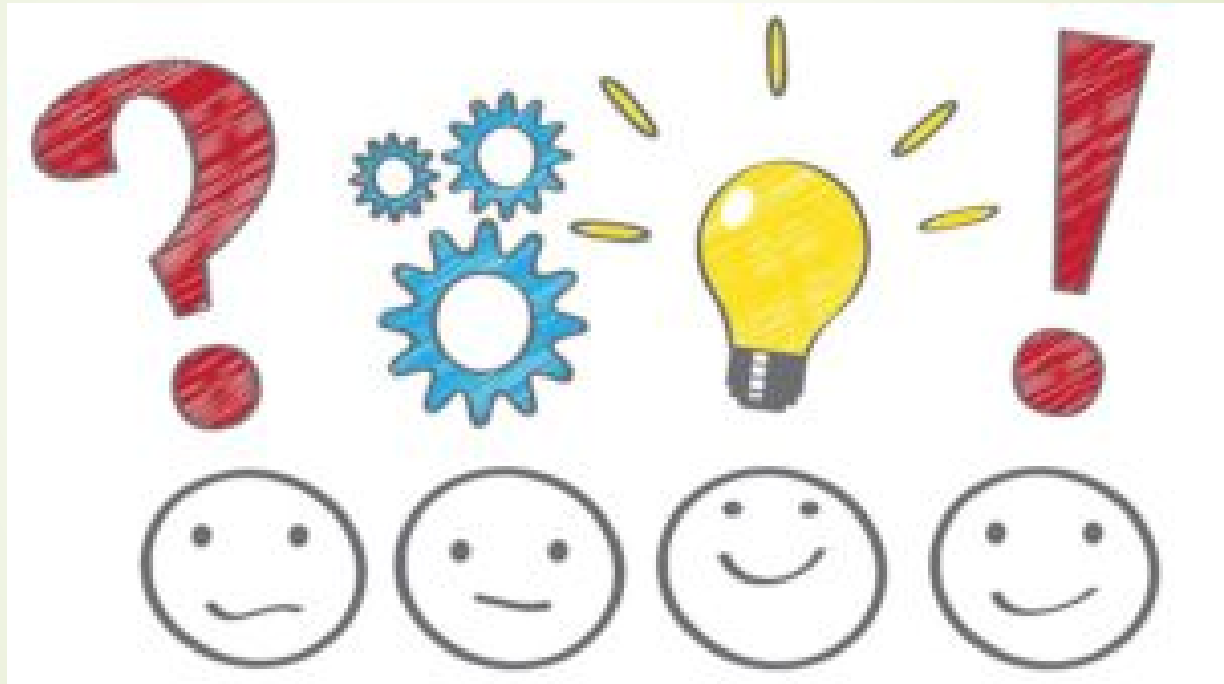
The Fox Valley Sustainability Network will hold a Transportation Forum on Wednesday, July 24 at the Prisco Center in Aurora, IL. We will take a look into what Fox River counties are doing to make their communities more bikeable and walkable.

When:

Wednesday, July 24
10:00 AM - 12:00 PM

Where:

Prisco Center
Aurora, IL
[150 W Illinois Ave, Aurora, IL 60506](https://www.foxvalleysustainabilitynetwork.org/transportation-forum)





SOLARIZE
CHICAGOLAND



Solar Power Hour

Hosted by Kane County

August 13, 2019

7:00-8:30 pm

Kane County Government Center: Building A Auditorium



www.growsolar.org/chicagoland/